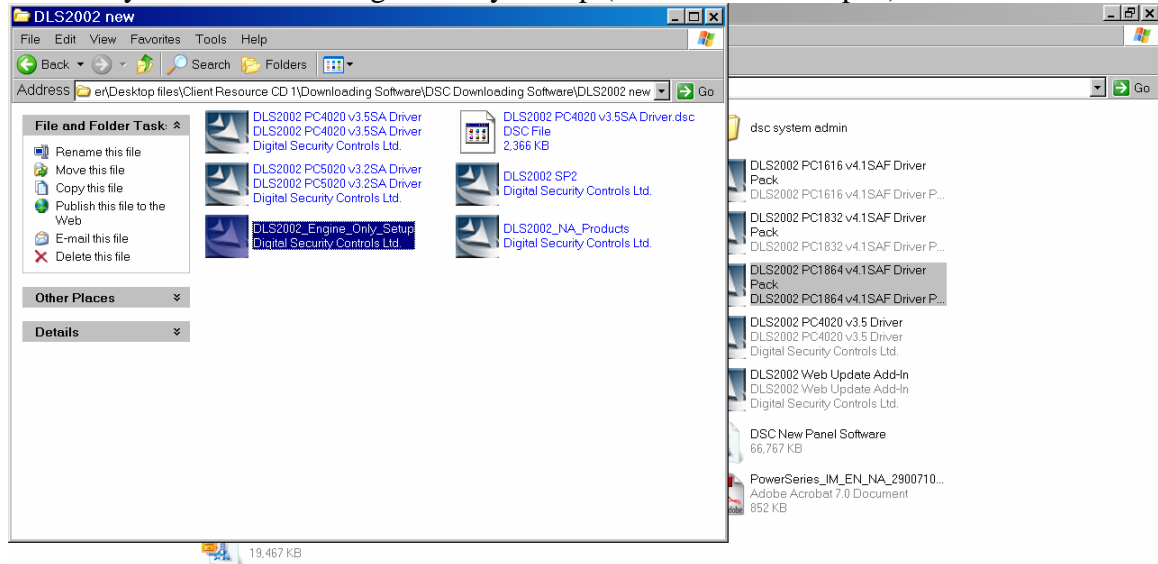


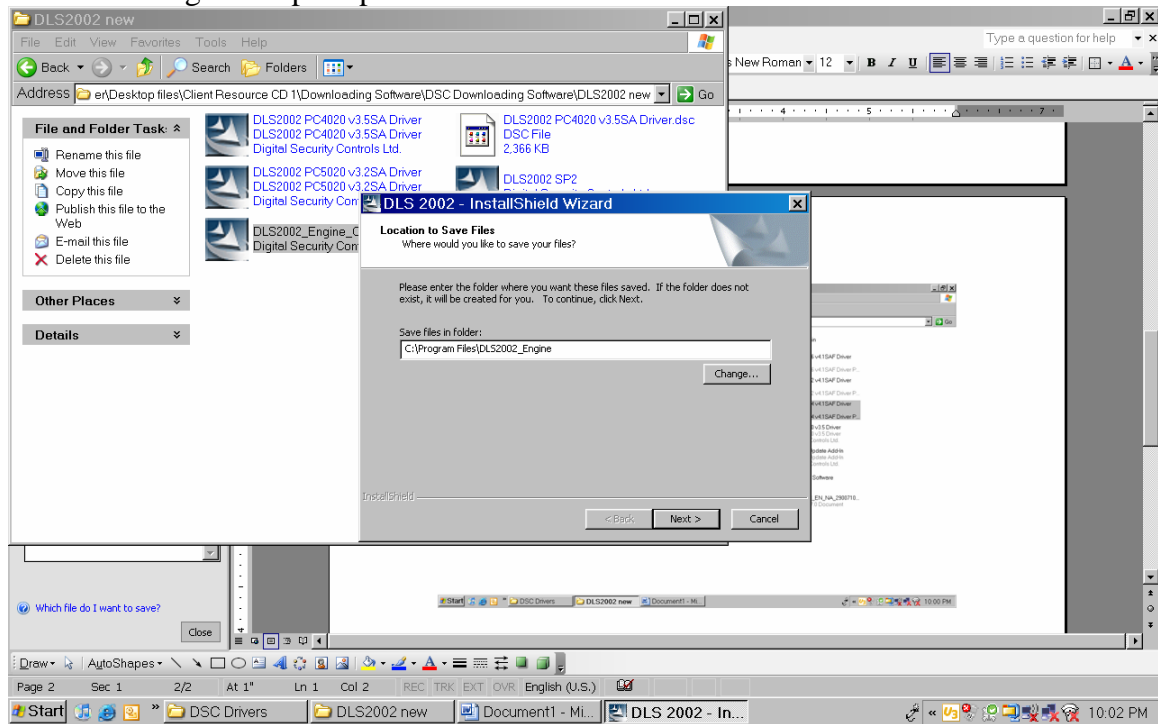
# Installation of the DLS Software

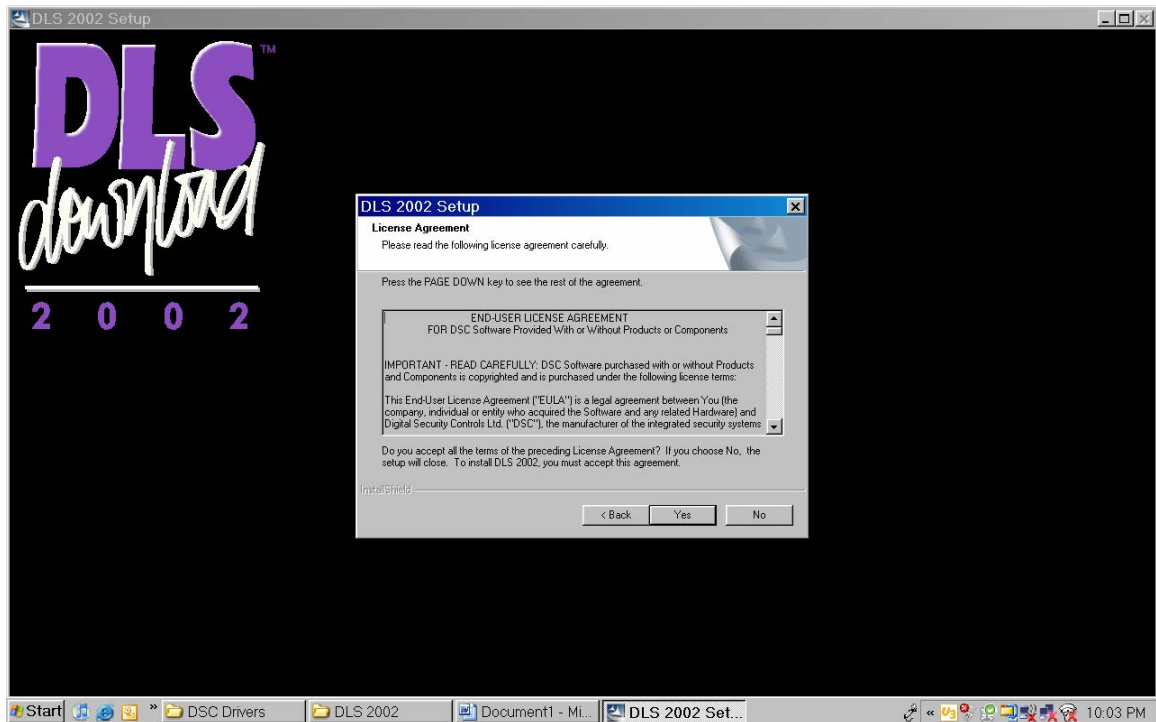
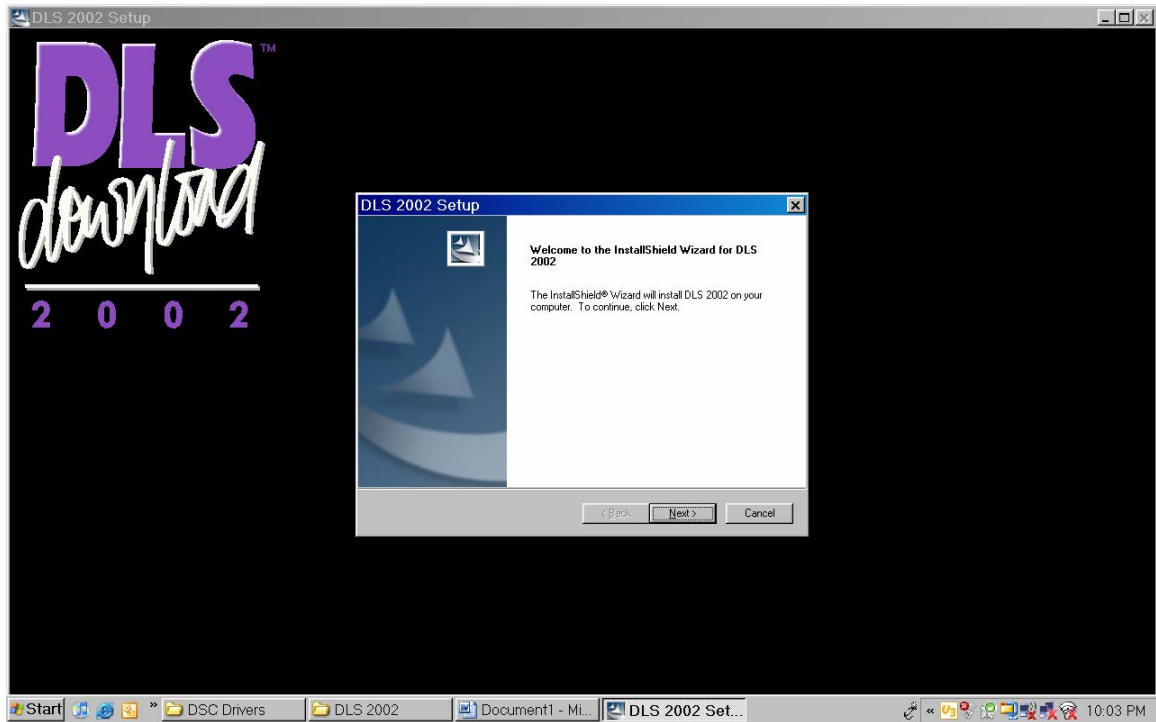
Step by Step Instructions:

a. Identify the DLS2002\_Engine\_Only\_Setup (Double Click to open)

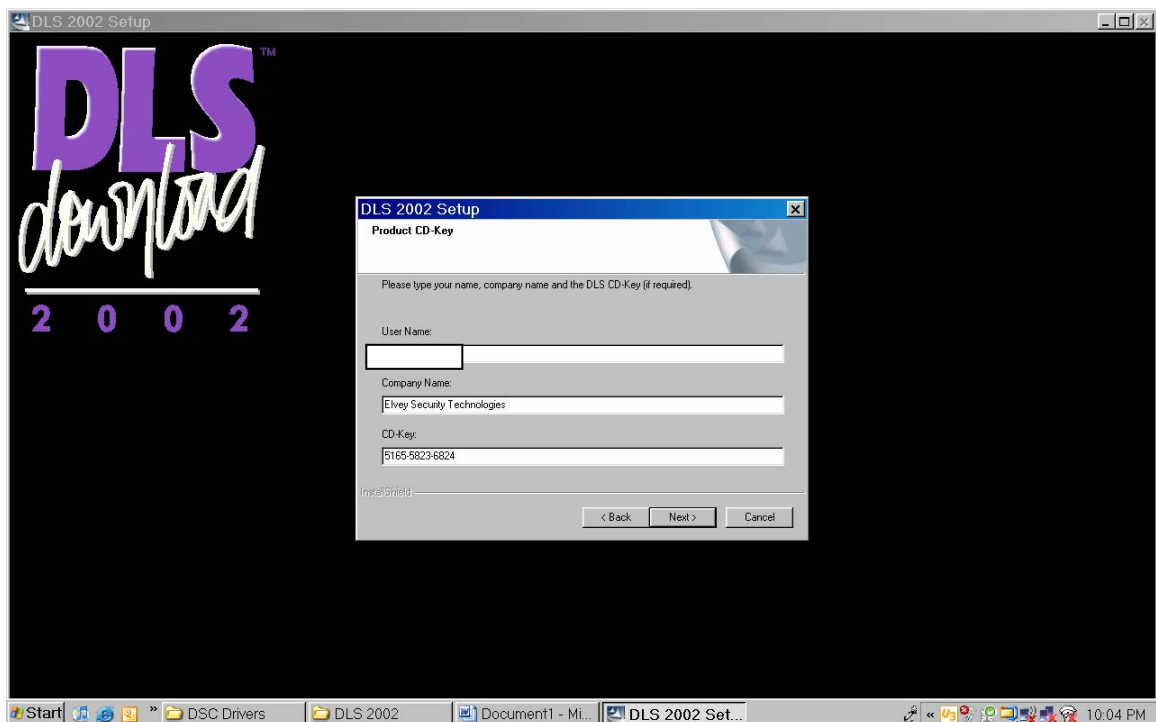
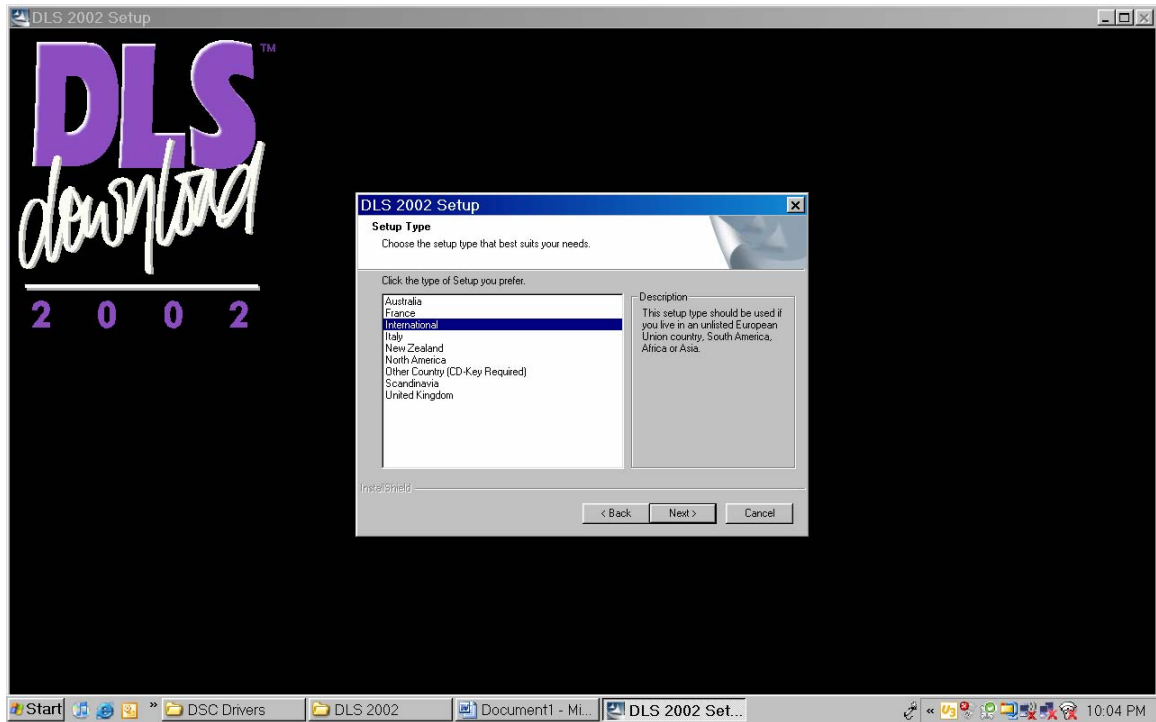


b. Enter through each prompt

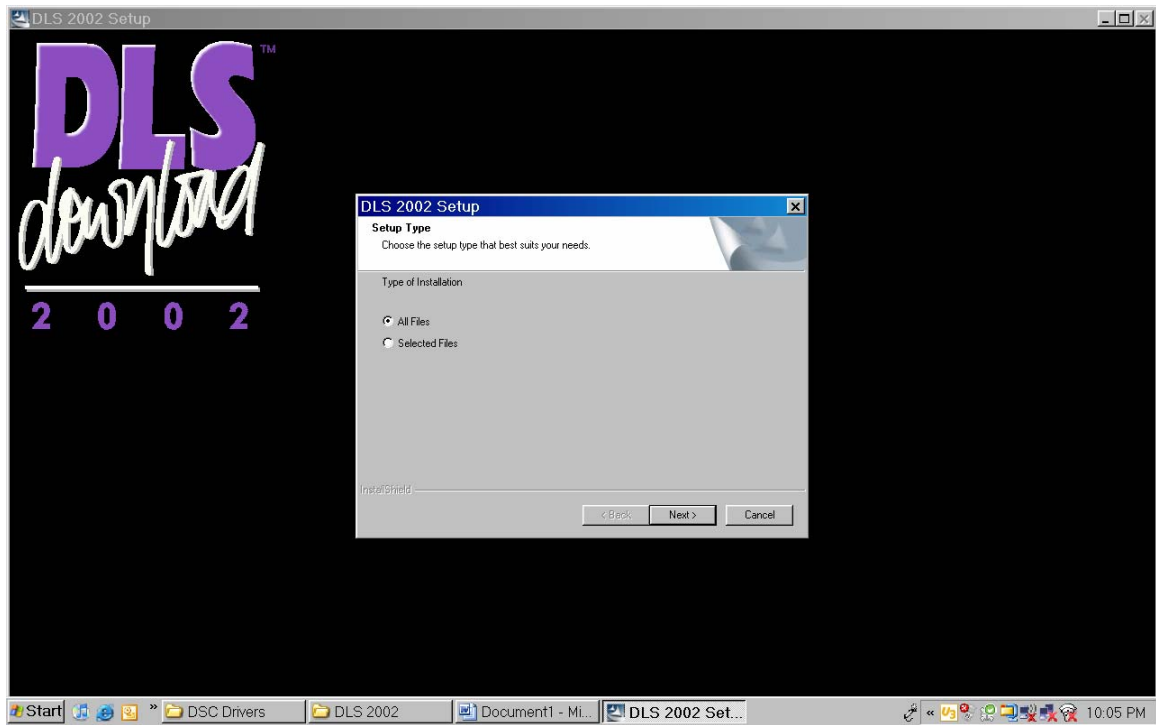
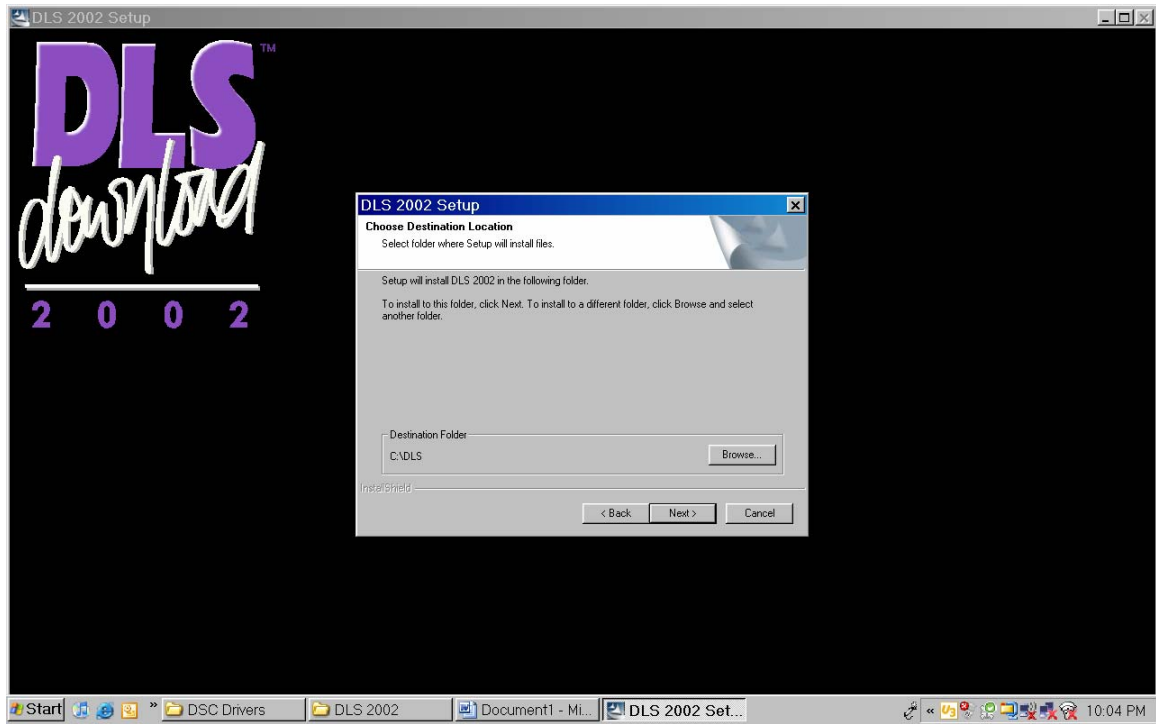


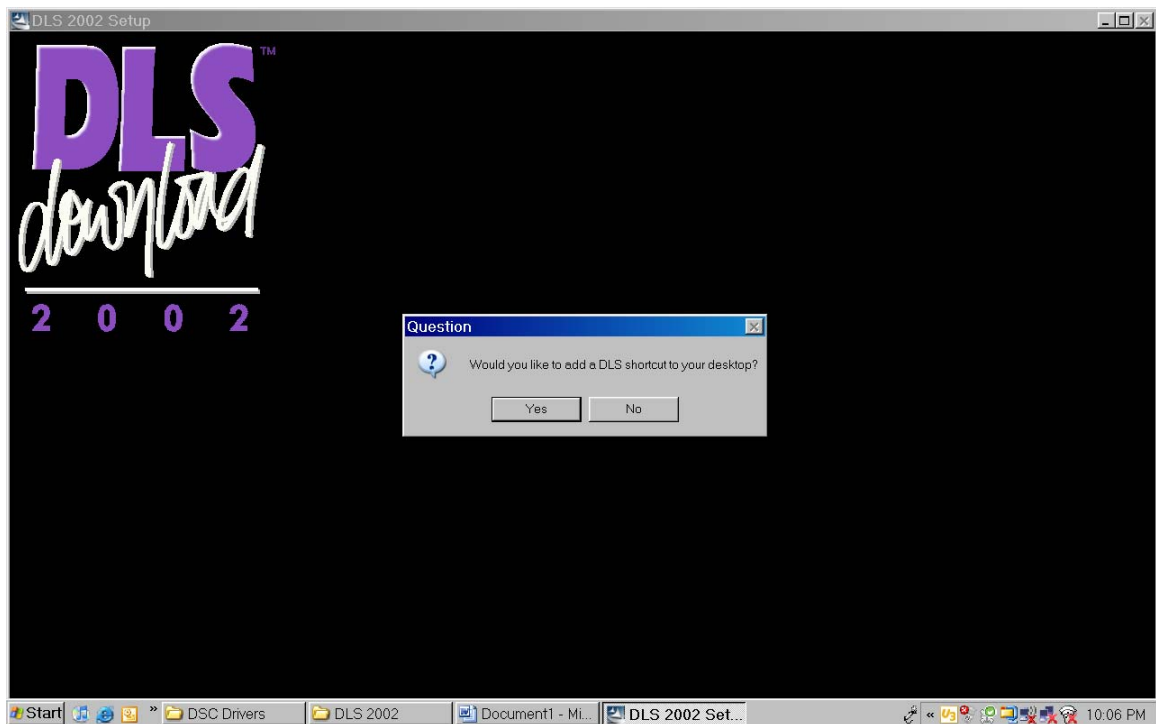
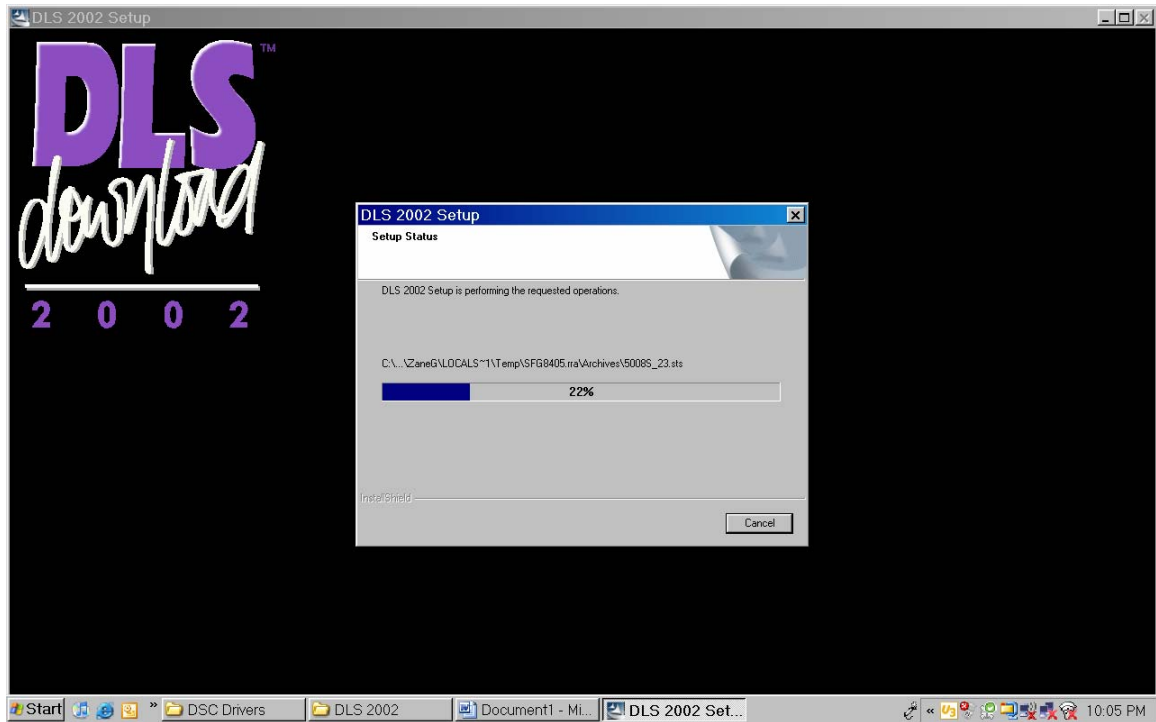


c. Select "International" Setup Type

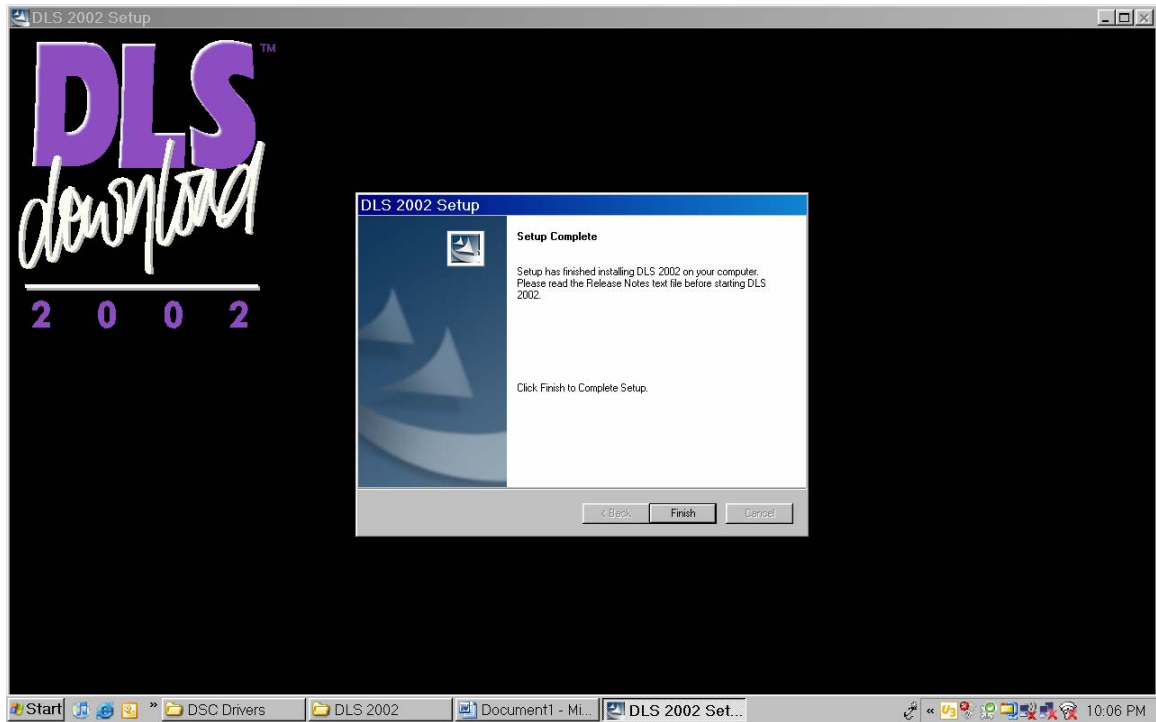


d. Destination Folder; C:\DLS

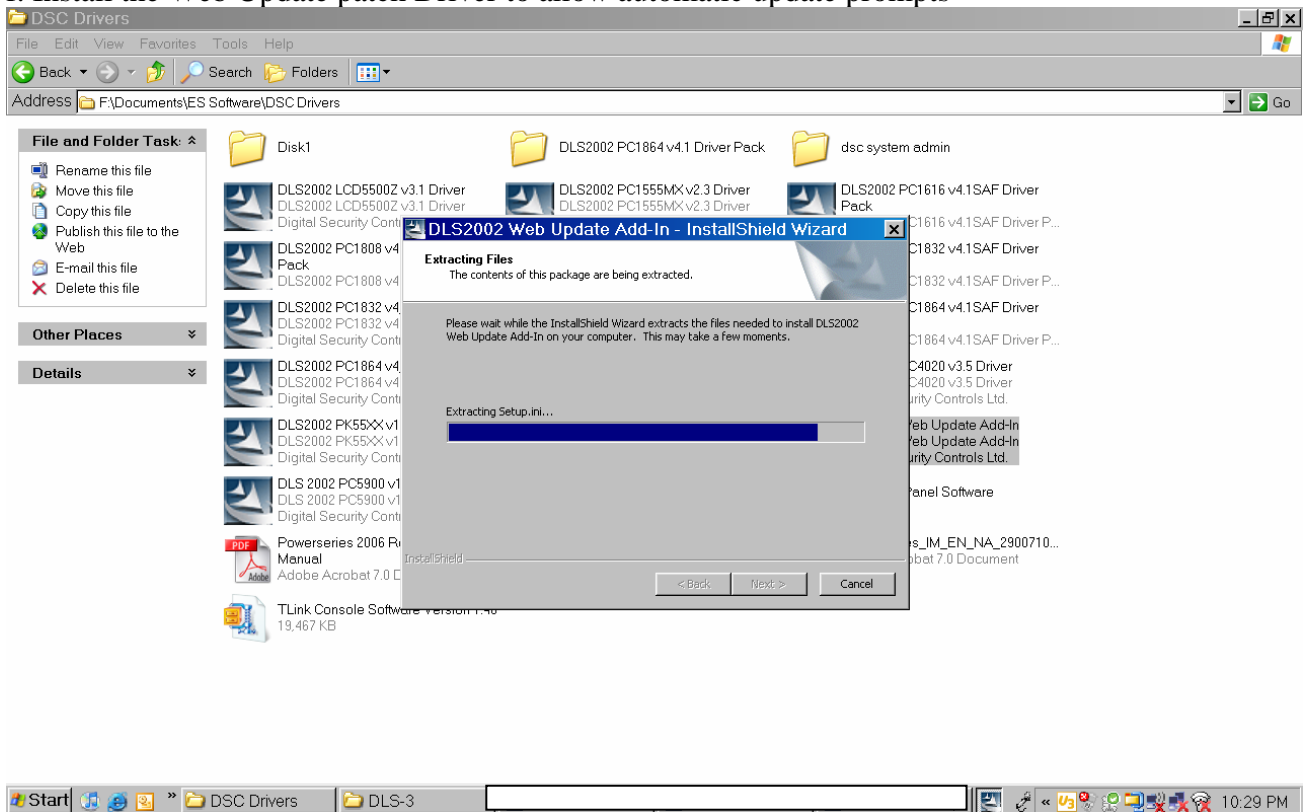




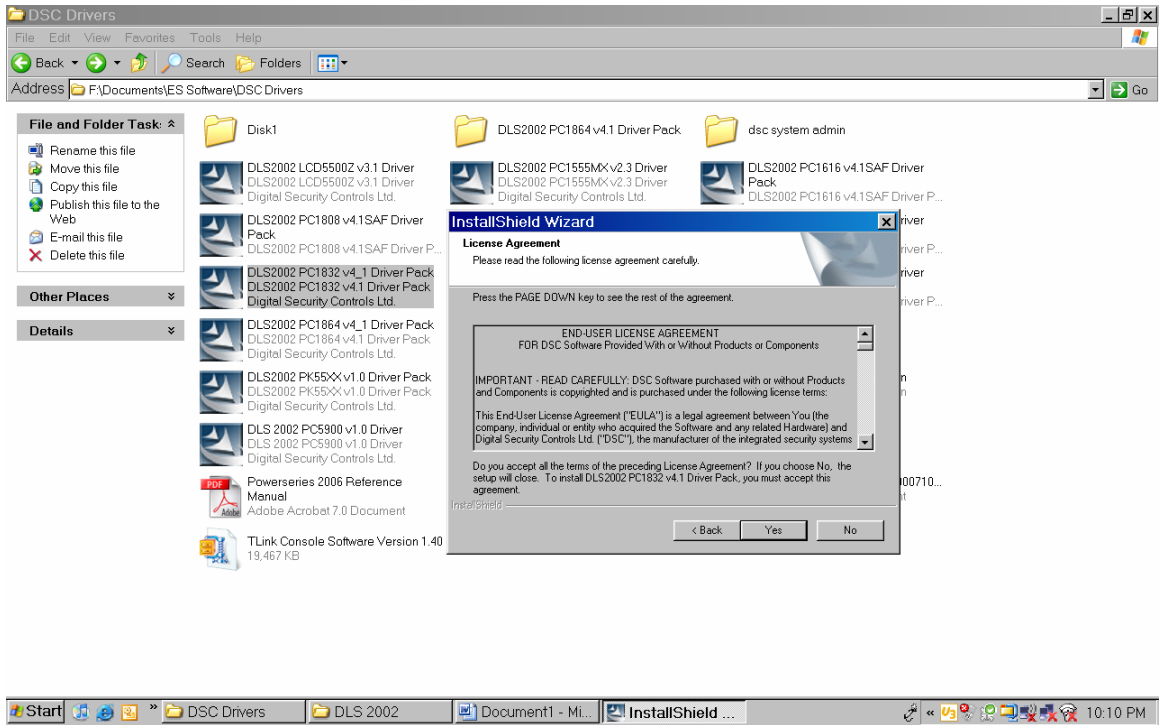
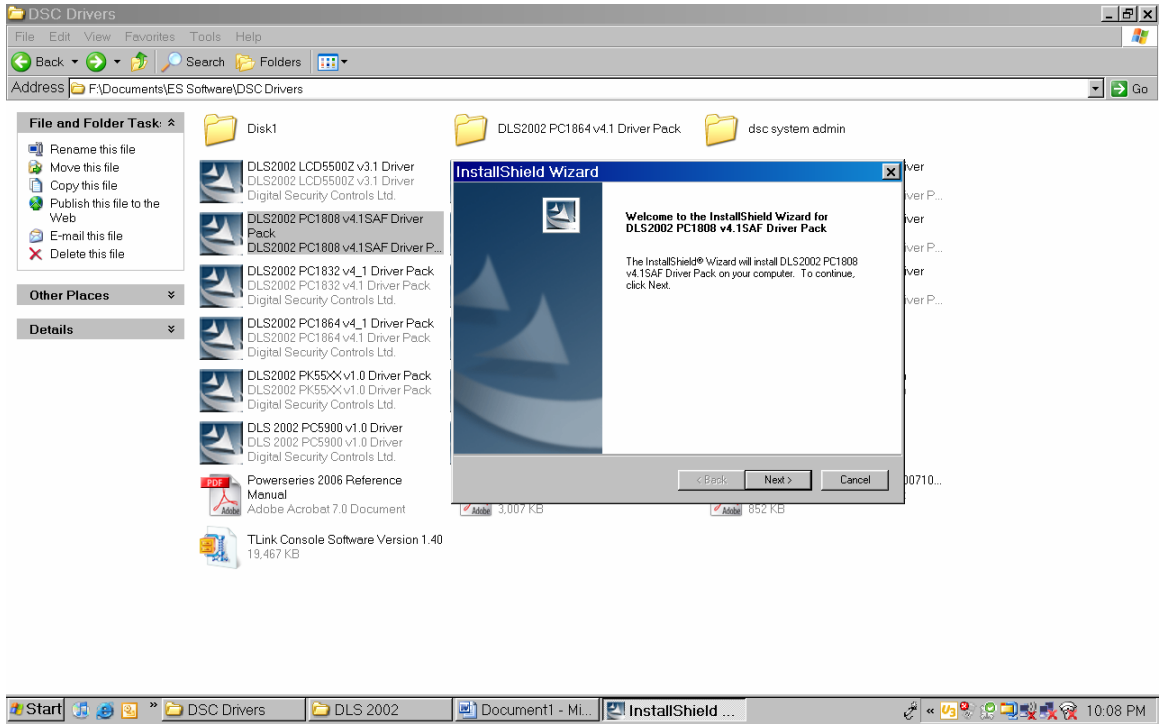
e. Follow prompts to the end to complete the Installation of the DLS Engine

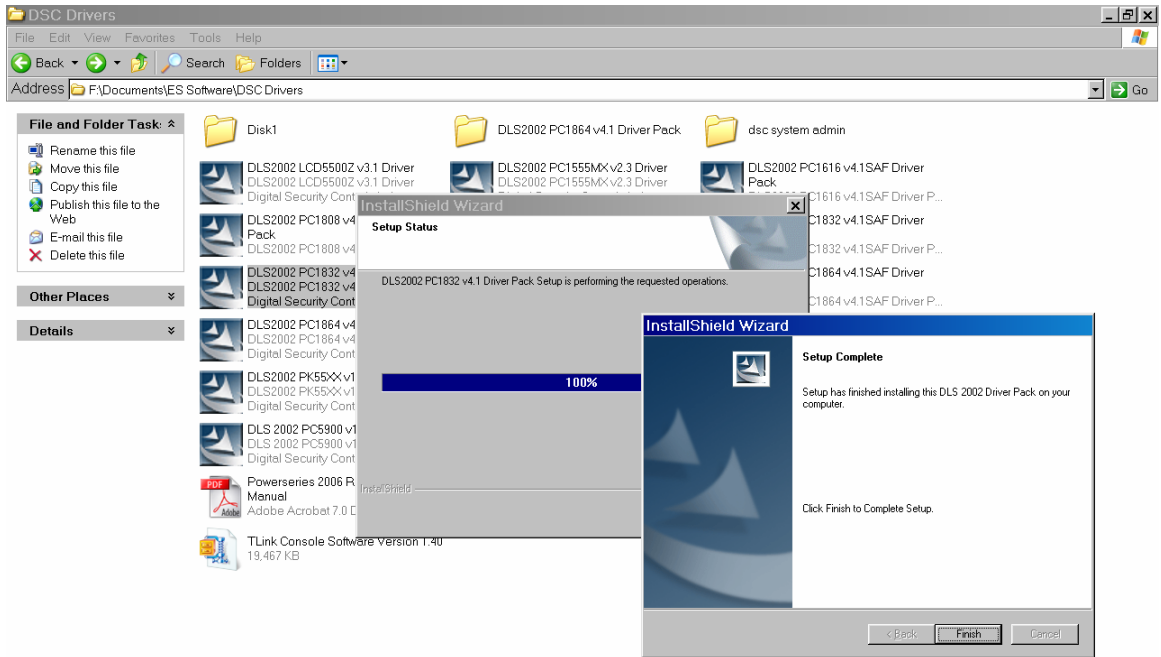
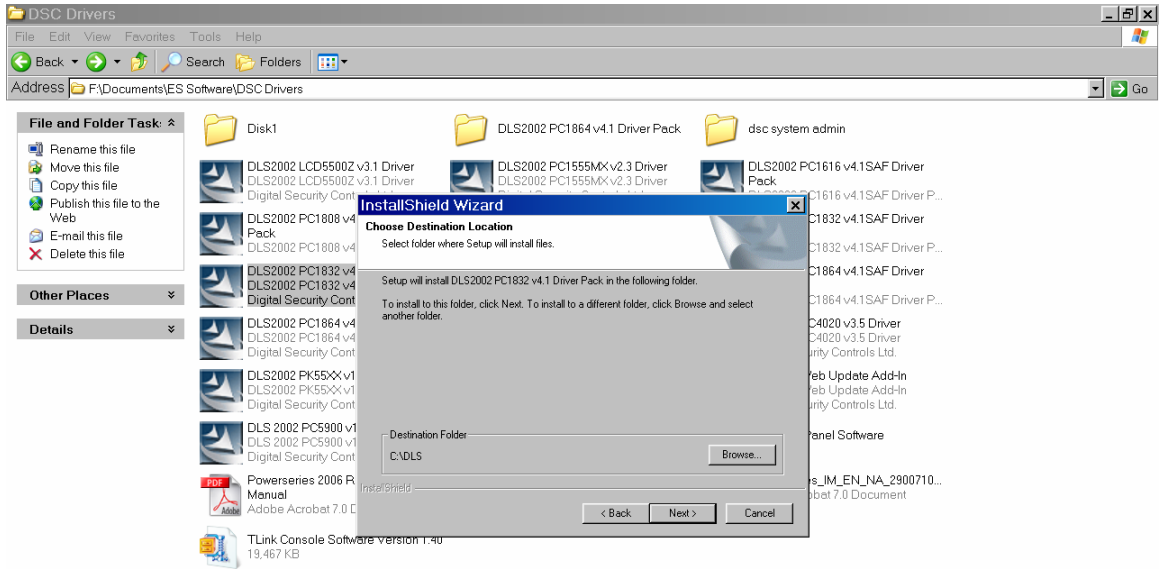


f. Install the Web Update patch Driver to allow automatic update prompts



g. Select each panels Driver and follow the prompted instructions with each patch

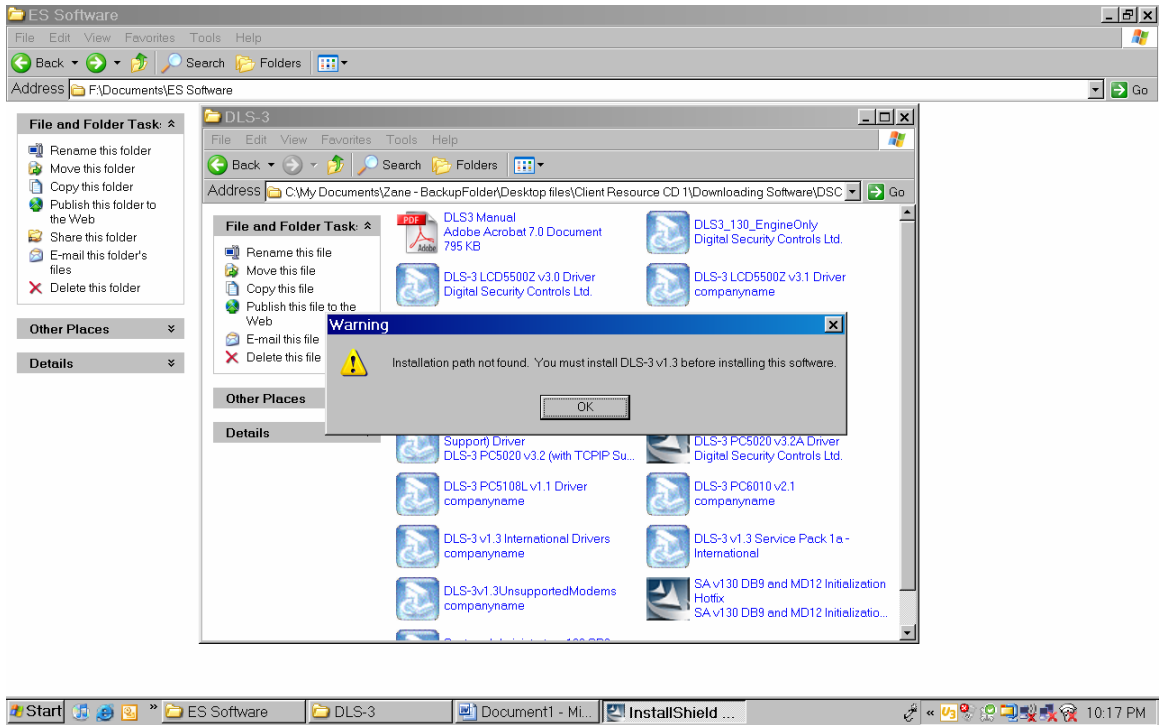
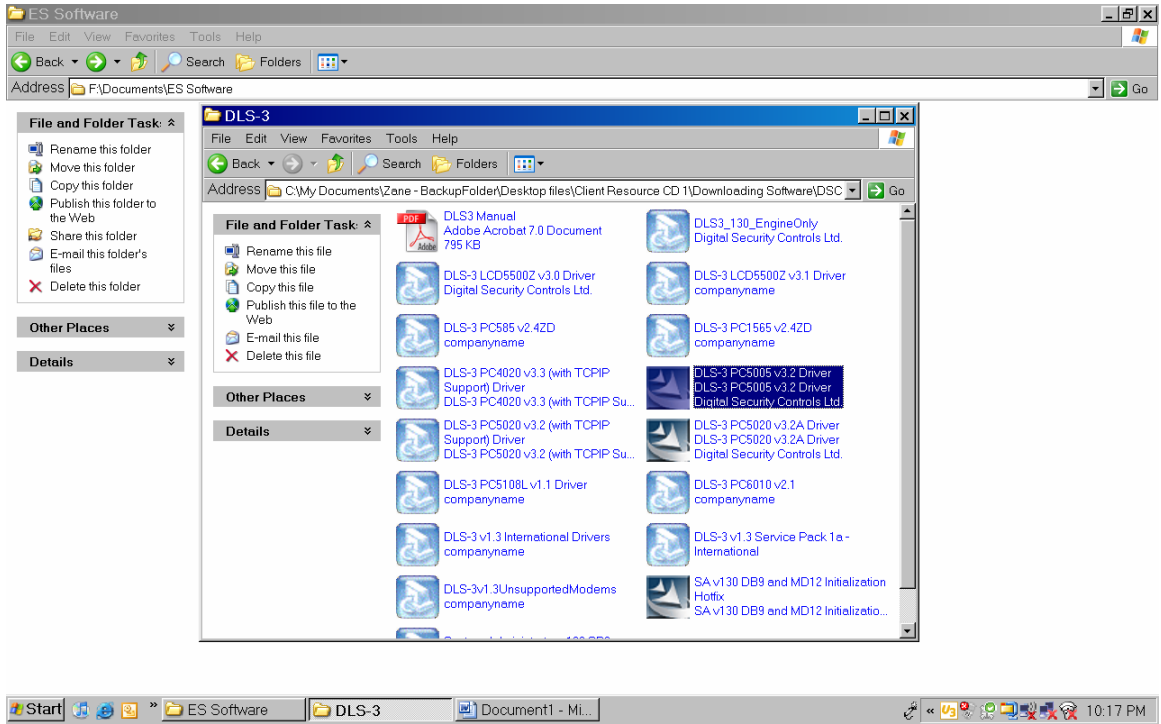


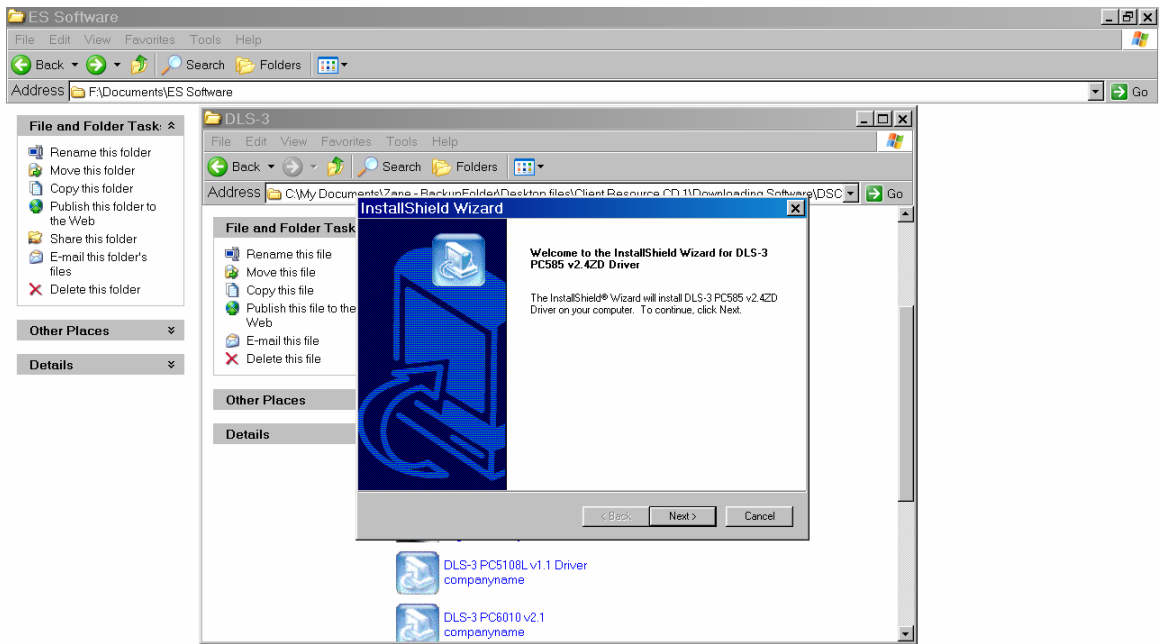
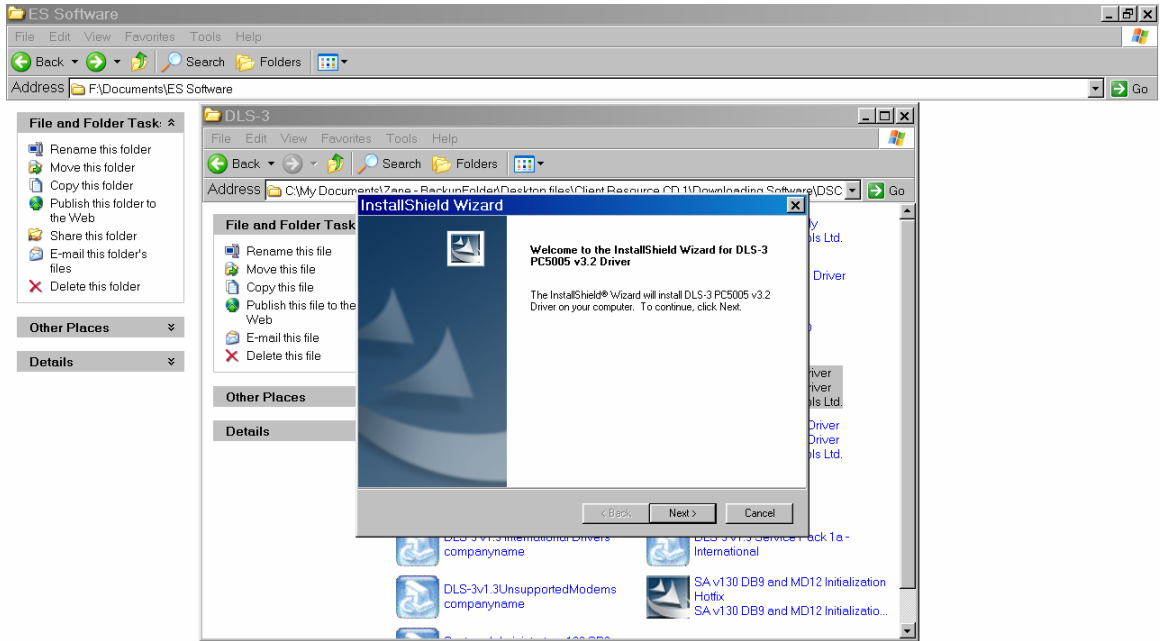


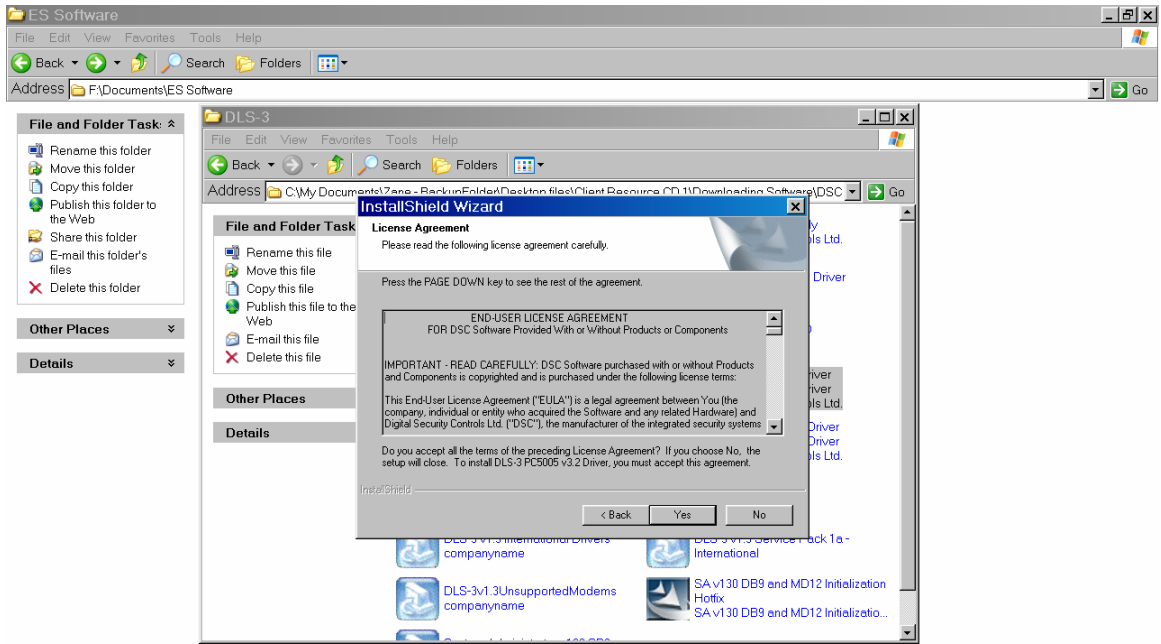
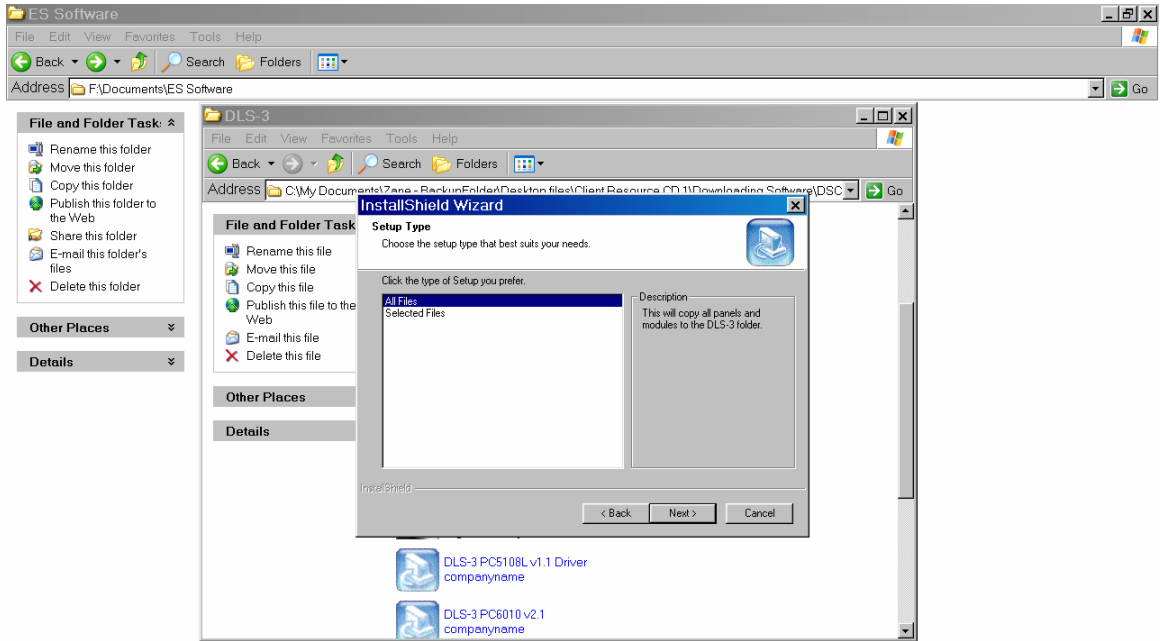
The above Installation will enable you to Download all new DSC Control Panels with the DLS 2002, path

To Install the 'older' Patch drivers to the new DLS Engine – Go to the DLS3 Folder and.....

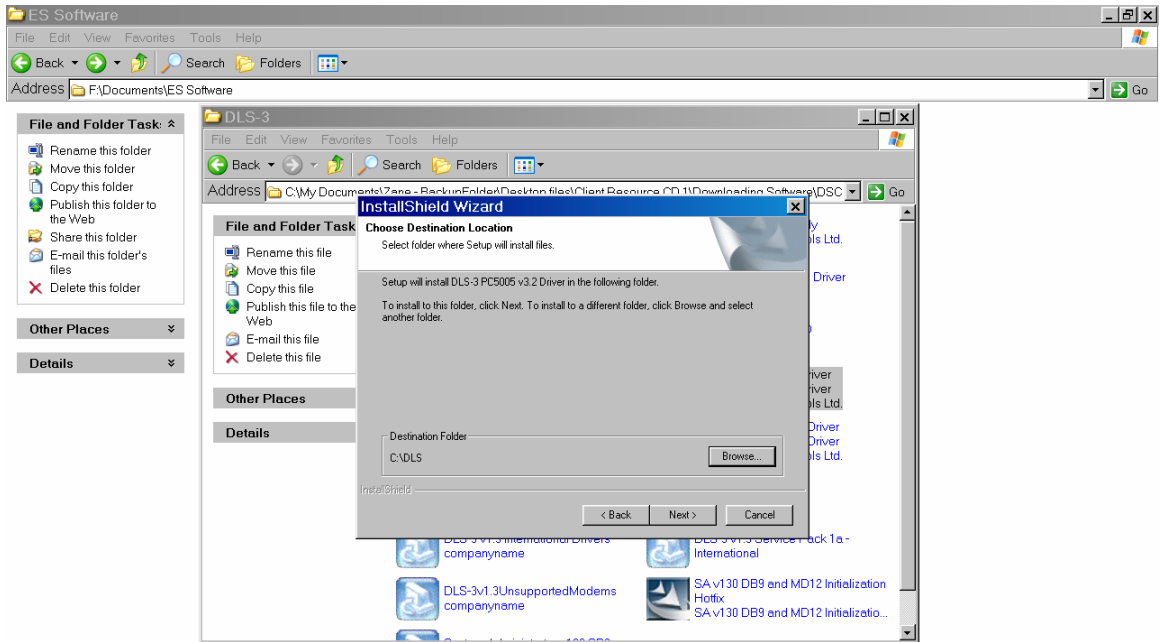
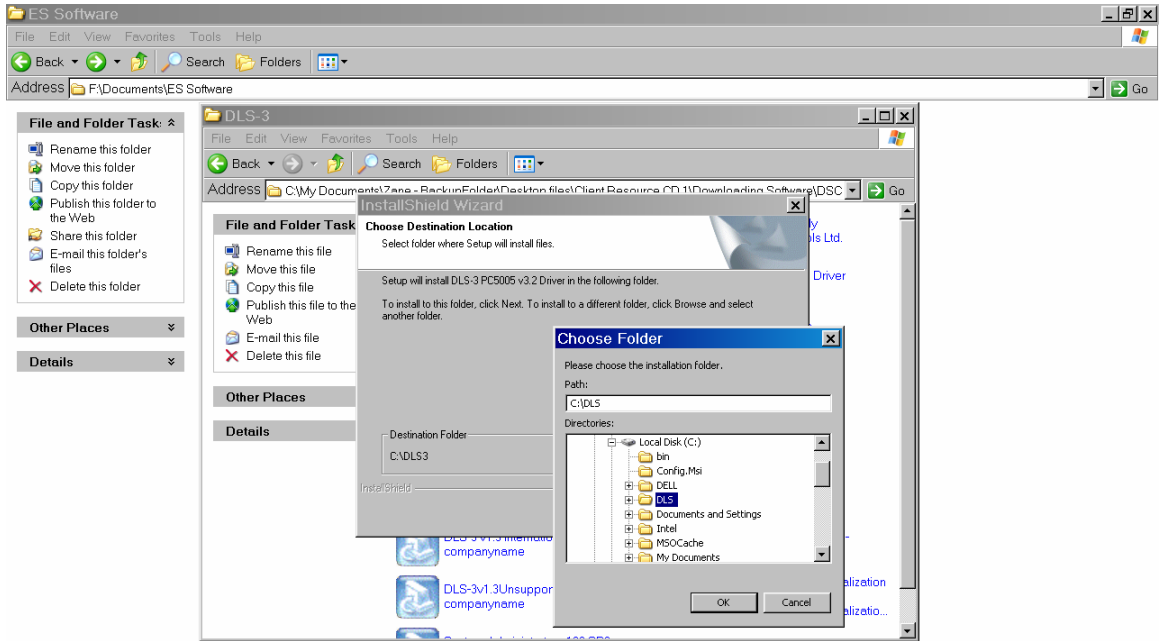
a. Select the Driver and follow instructions

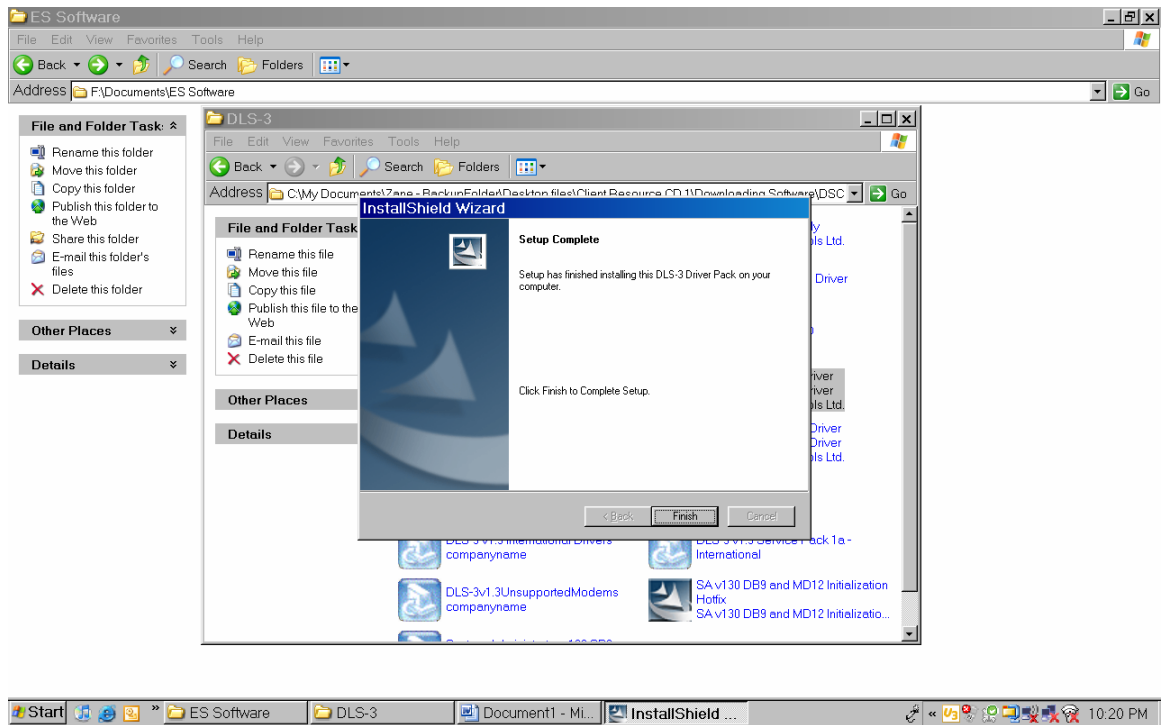






b. Change the Destination Location from; c:\DLS3 to c:\DLS





c. Follow same instruction for each 'Old' Driver you wish to install

Congratulations you have Successfully Installed the DSC DLS Software

1. Restart your computer
2. Find the DLS2002 Icon on your Desktop
3. Open the package and Insert the Security Stamp: 12345678
4. DLS User name: DSC
5. DLS Password: 1234